



Rockfon® Mono® Acoustic

SPACES AS STUNNING AS THEY SOUND.

Sounds Beautiful

BE INSPIRED BY OUR MONO ACOUSTIC CASE STUDIES

Content

- 04 Introduction
- 06 Flat and smooth
- 22 Curved and inclined
- 28 Geometric
- 32 Technical information
- 34 Sustainability





Introduction

Capture a signature look and brilliant acoustics in a single masterstroke.

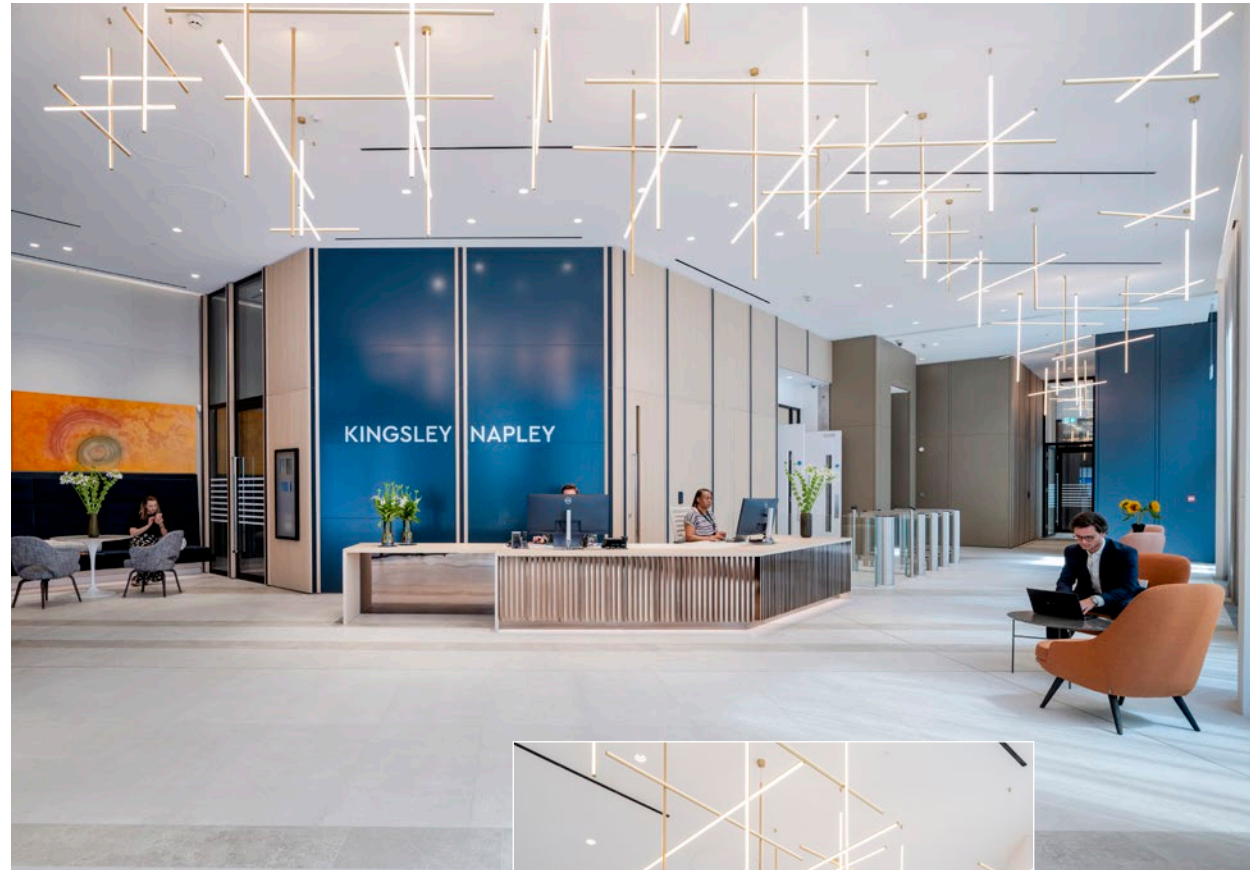
Rockfon Mono Acoustic opens unlimited possibilities for creating both statement architectural ceilings or discreet, unobtrusive ceilings. Flat, sloped, curved into any shape you like, it is used in high end and conservation projects.

Made from sustainably sourced recyclable stone wool and Cradle-to-Cradle Certified Bronze, Rockfon Mono Acoustic reflects today's design trends of bold lines and smooth surfaces. It provides optimal acoustic comfort and visual comfort as natural light is dispersed so effectively.

Take a look for yourself.

Be inspired by our
reference projects

Flat and smooth Rockfon Mono Acoustic projects



Project Kingsley Napley office, 20 Bonhill
Product Rockfon Mono Acoustic white
Architect KKS Savills
Installer Pacy and Wheatley





Project Hotel des deux Girafes and Restaurant, Paris, France
Product Rockfon Mono Acoustic black
Installer PREMIEC





Project Eli Lilly campus, County Cork, Ireland

Product Rockfon Mono Acoustic white

Architect RKD of Cork

Installer Laide & O'Brien



Project L'Oréal Headquarters, France
Product Rockfon Mono Acoustic white
Architects DGM and Associates, B&B Architects
Installer AUGAGNEUR PMG

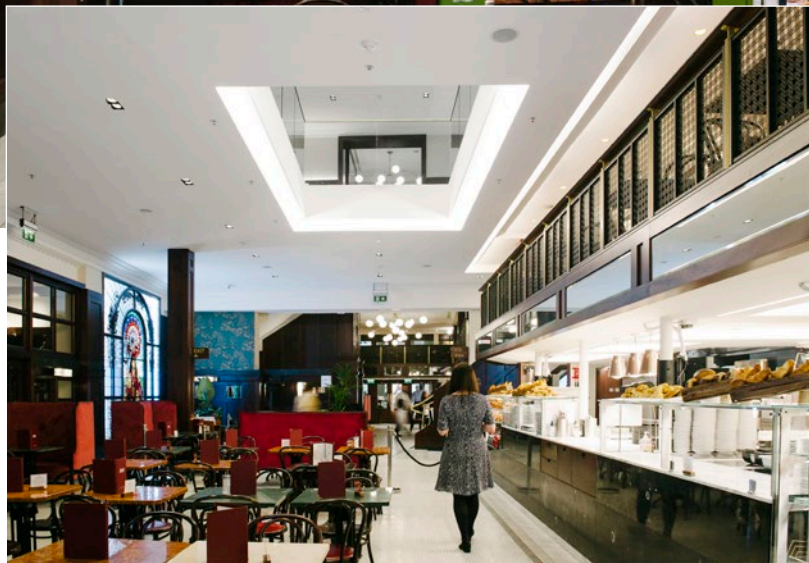




Project Vorwerk store, Lyon, France
Product Rockfon Mono Acoustic white
Installer AML



Project Restaurant/Brasserie Astoria, Stockholm, Sweden
Product Rockfon Mono Acoustic green



Project Bewley's Cafe, Grafton Street, Dublin
Product Rockfon Mono Acoustic white
Architect Gilligan Architects
Installer Reilly Ceiling & Drywall



Project Limes Museum, Aalen, Germany
Product Rockfon Mono Acoustic black
Architect EGGER KOLB Architekten



Project Mobalpa Showroom (Le Bourget du Lac), Paris, France
Product Rockfon Mono Acoustic white
Architect Patriarch
Installer SRBC



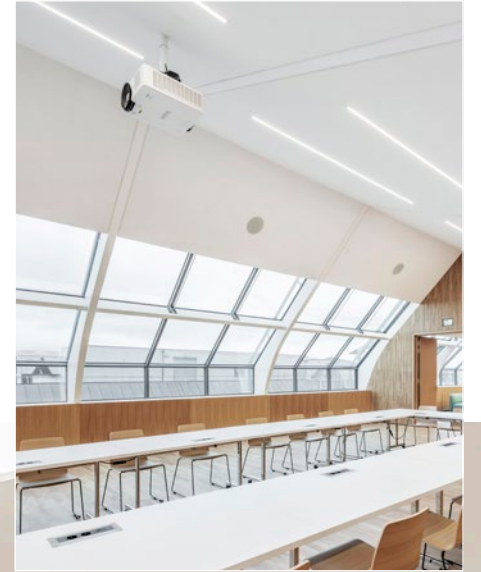


Project Leicester City FC Training Ground, Seagrave, Leicestershire

Product Rockfon Mono Acoustic white

Architect: KKS Savills

Installer Pacy & Wheatley



Project Headquarters of Electricity of Strasbourg
Product Rockfon Mono Acoustic white
Architect Anne-Laure Better from Richter Architects
Installer STAM





Project Soprema office, Strasbourg, France
Product Rockfon Mono Acoustic white
Architect Francois Remion
Installer APID-CONCEPT sub-contractor for RUIU

Project Roland Garros players' restaurant, Paris, France

Product Rockfon Mono Acoustic burnt orange

Architect ACD Girardet and Associates

Installer AQUILON Company





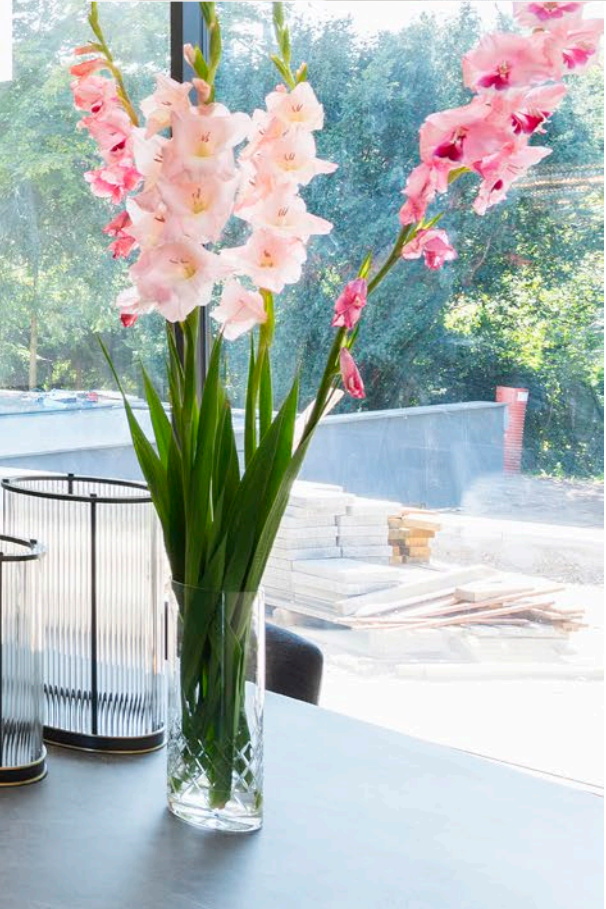
Project University of Southern Denmark, Odense

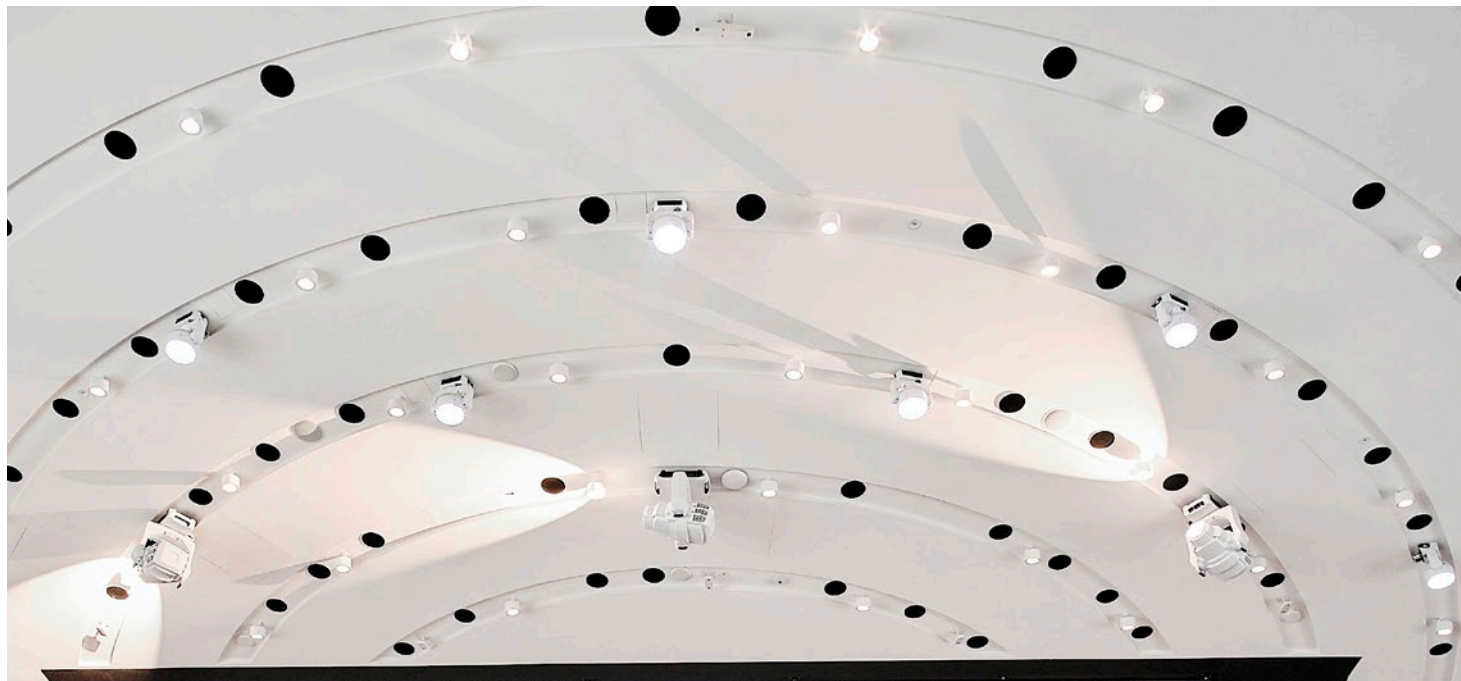
Product Rockfon Mono Acoustic white

Architect CF Moller

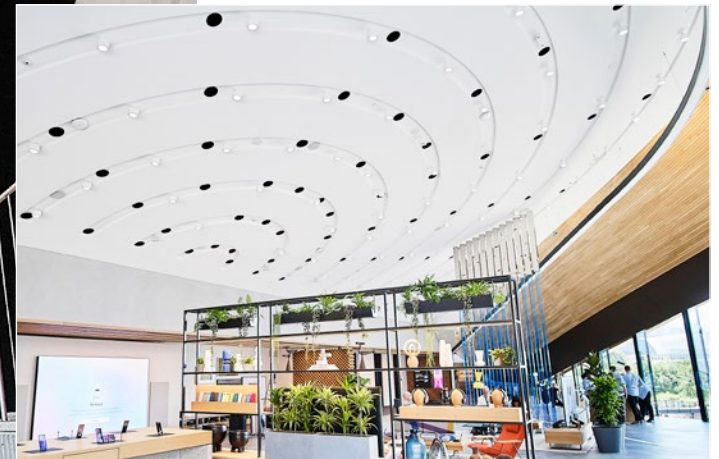
Installer Danish Building & Property Agency

Project Residential
Product Rockfon Mono Acoustic white

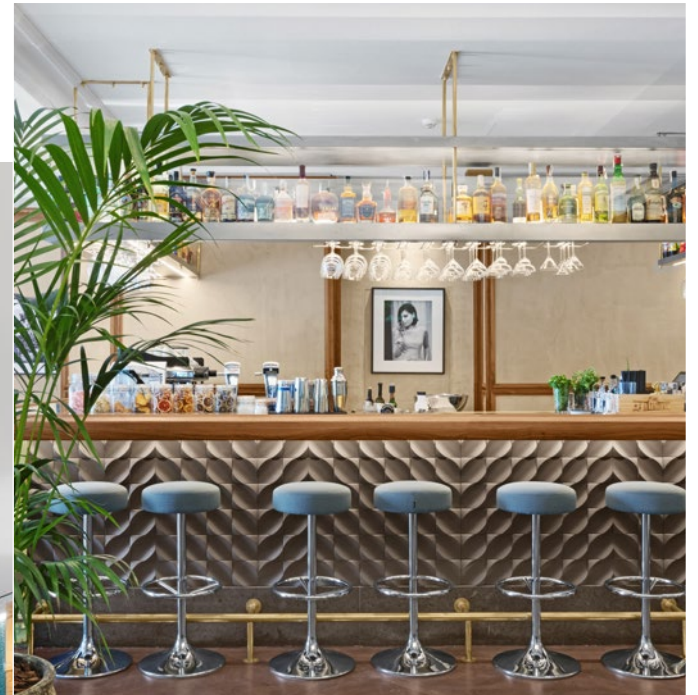




Project SamsungKX Shopping Centre,
London, United Kingdom
Product Rockfon Mono Acoustic white



Project Hotel El Llorenç Parc de la Mar, Mallorca, Spain
Product Rockfon Mono Acoustic white





Be inspired by our
reference projects

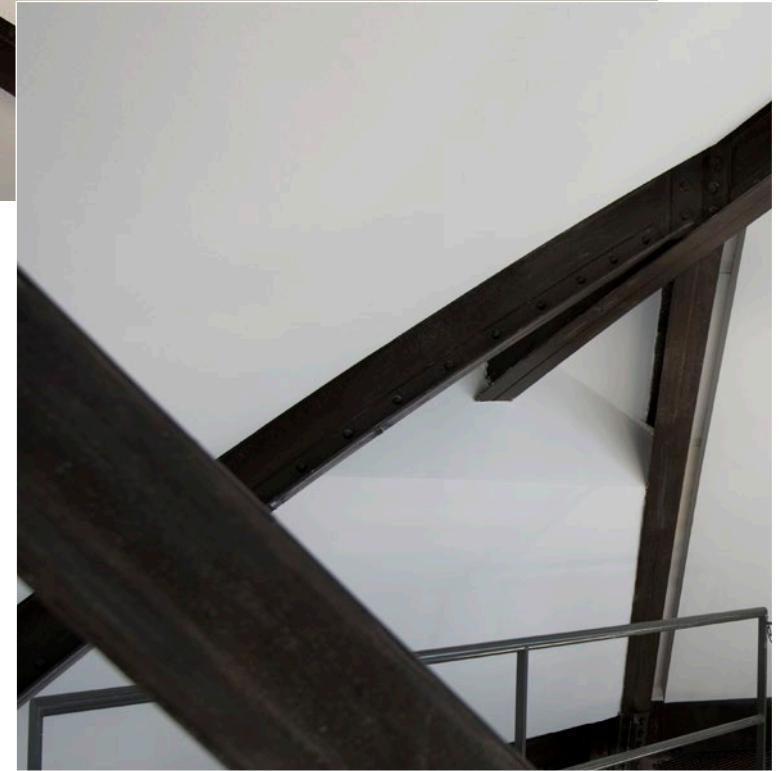
Curved and inclined Rockfon Mono Acoustic projects



Project Oodi Central Library, Helsinki, Finland
Product Rockfon Mono Acoustic white
Architect ALA Architects



Project Comedie Francaise, Paris, France
Product Rockfon Mono Acoustic white
Architect Stéphane Delaby, Brossy & Associates Agency
Installer SAFAIP





Project Church of Our Lady of the Star of the New Evangelisation and St John Paul II, Torun, Poland

Product Rockfon Mono Acoustic white

Architect Andrzej Ryczek

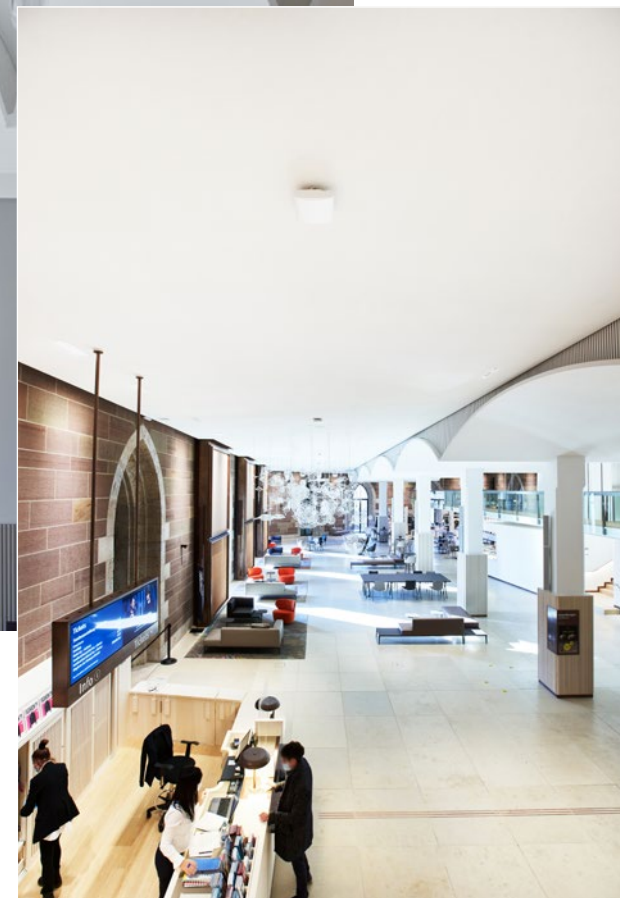
Installer Prosystem Krzysztof Dziewulski

Project Landesmuseum Württemberg, Stuttgart, Germany

Product Rockfon Mono Acoustic white

Architect Pia Elser

Installer Reisser GmbH

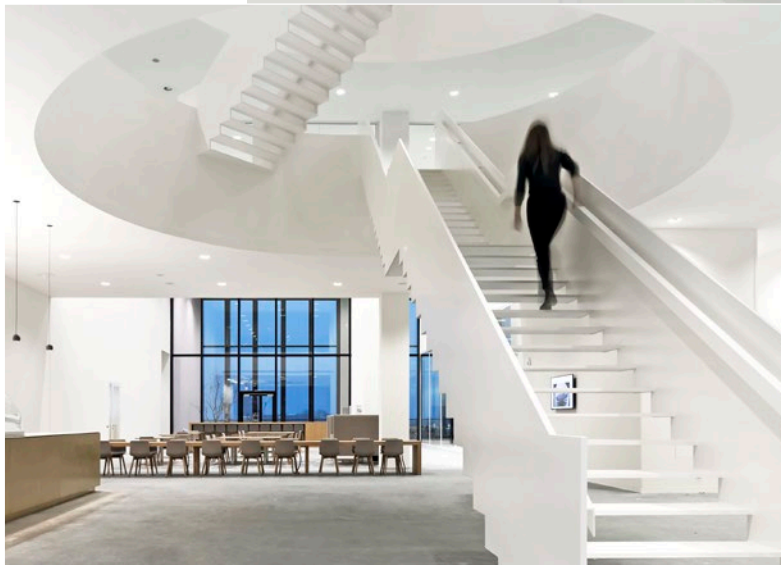


Project Church of the Blessed Stefan Wincenty Frelichowski, Torun, Poland

Product Rockfon Mono Acoustic white

Installer Prosystem Krzysztof Dziewulski



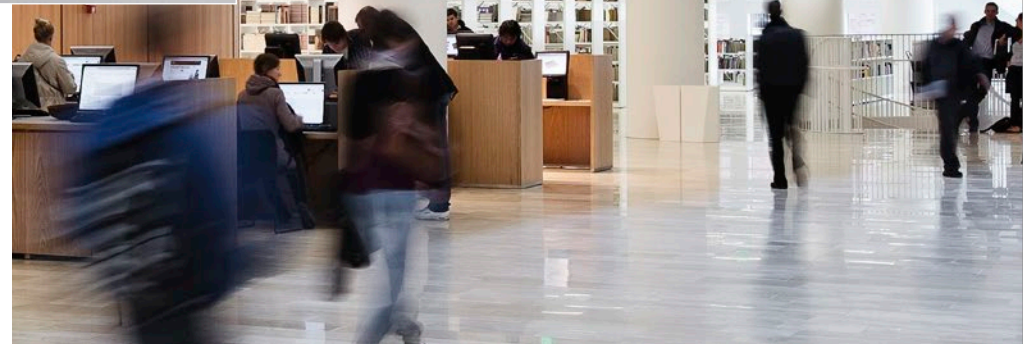
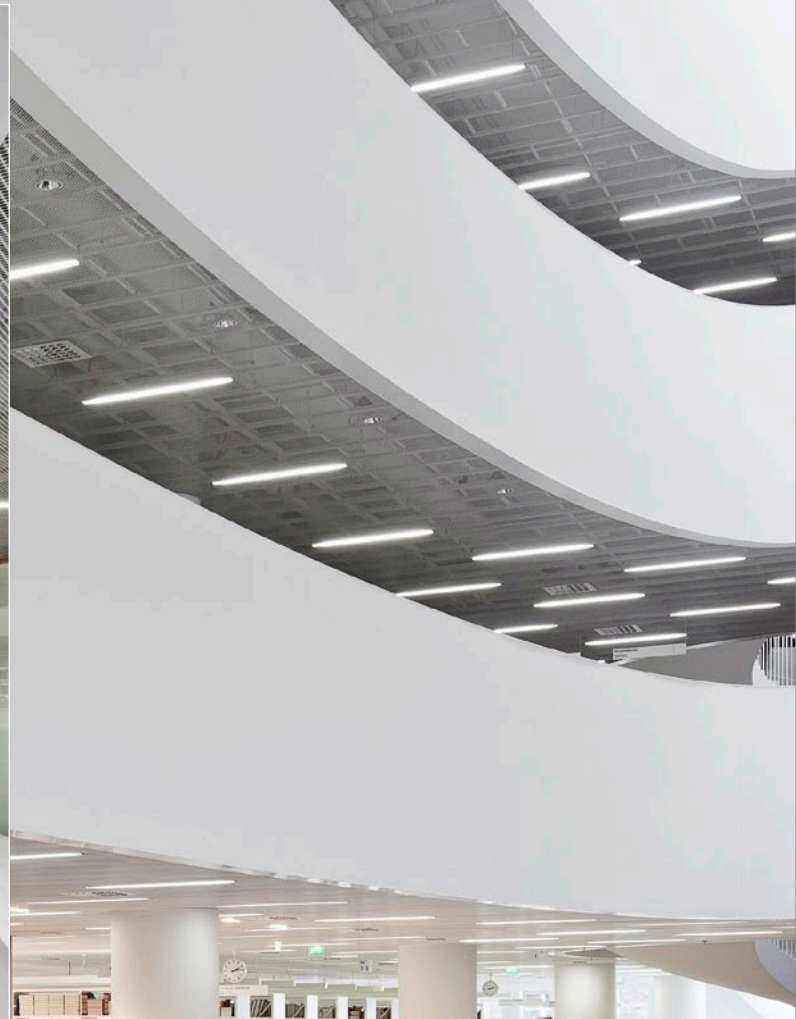


Project Reception of the Nieuwe Rechtbank, Amsterdam, Netherlands
Product Rockfon Mono Acoustic white

Project Kaisa house library, Helsinki, Finland

Product Rockfon Mono Acoustic white

Architect Selina Anttinen + Vesa Oiva, Anttinen Oiva Architects (AOA)





Project Platea, Madrid, Spain
Product Rockfon Mono Acoustic white
Interior Designer Lazaro Rosa-Violan





Be inspired by our reference projects

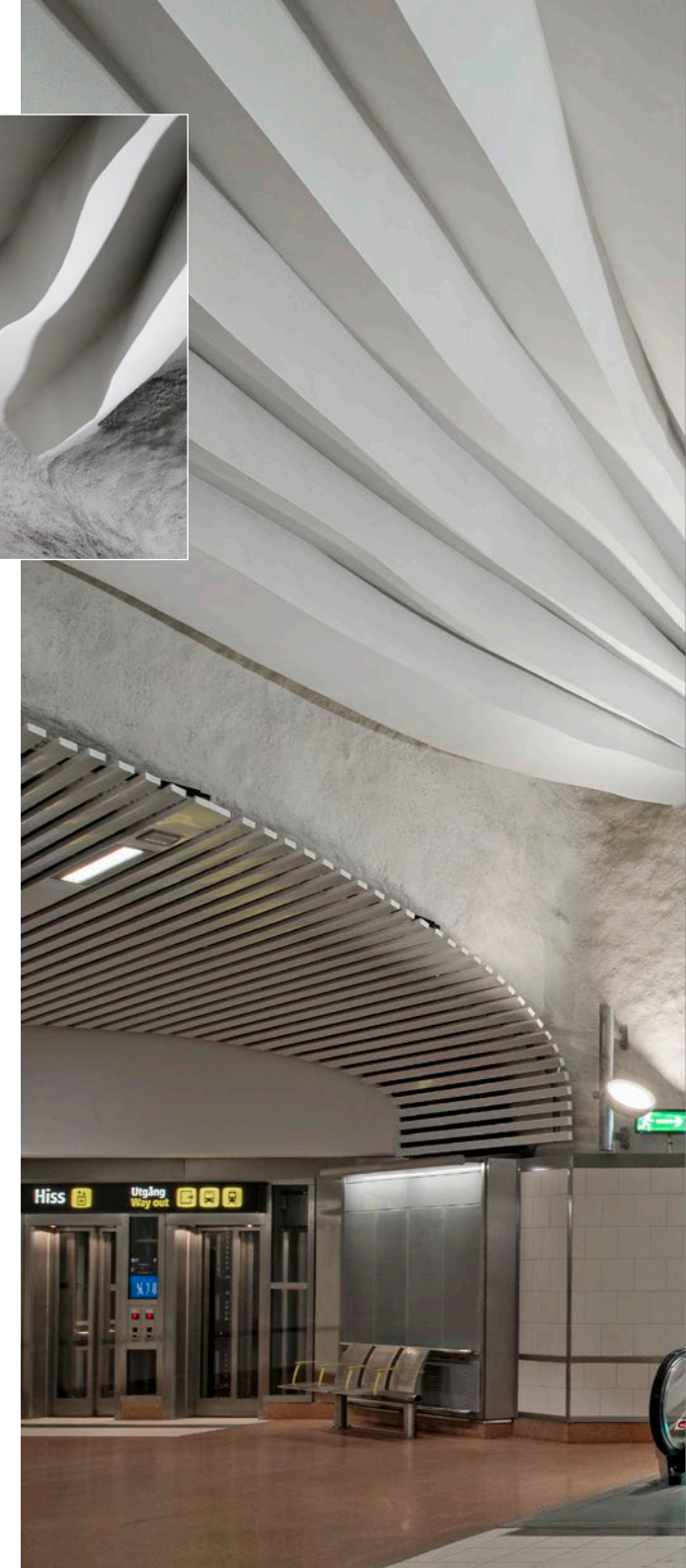
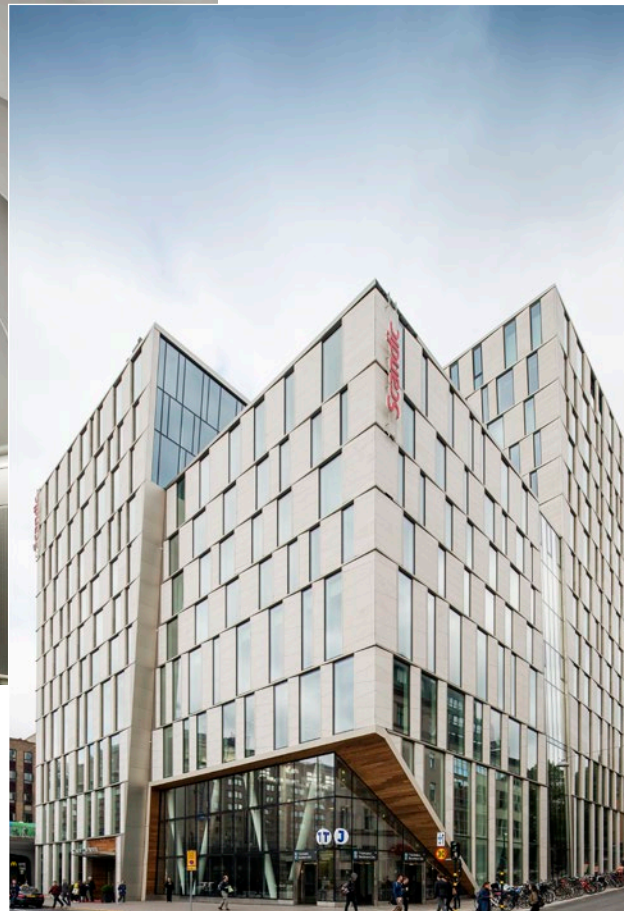
Geometric Mono Acoustic projects



Project Hotel Llauate Palace, Majorca, Spain
Product Rockfon Mono Acoustic white
Architect Arantxa Guerrero, Seta Arquitectos

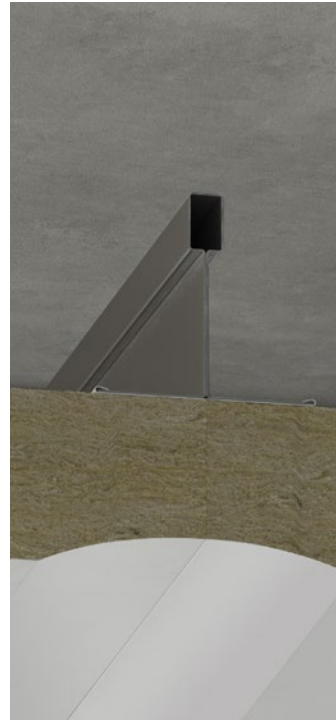


Project Metro station, Stockholm, Sweden
Product Rockfon Mono Acoustic white
Designer K. Lindh





Rockfon Mono Acoustic



A smooth installation process

The installation of Mono Acoustic requires a number of steps: 1) Assembly of the framework and the panels 2) Application of powder coatings and joints, 3) Adding the finishing coating. With the know-how of our partners you are guaranteed an excellent result.

IAM Rockfon®
Mono Acoustic
INSTALLATEURS AGRÉÉS

A seamless ceiling design

The stone wool based acoustic panels are available in 3 versions and can be adapted to your design needs.

We have developed the Chicago Metallic™ Monolithic grids and accessories perfectly suited to this system to optimize installation process and provide you with a complete and efficient system. Our inspection hatches provide access to services above to guarantee a monolithic and seamless design.





The Complete Range of panels

- Rockfon Mono Acoustic TE
- Rockfon Mono Acoustic Direct
- Rockfon Mono Acoustic Flecto

Chicago Metallic™ Monolithic Grids

- Monolithic main runner T35 3600
- Monolithic cross tee 1200
- Monolithic C wall channel

The accessories

- Rockfon Mono Acoustic Intersection Bracket
- Rockfon Mono Acoustic Washer
- Rockfon Mono Acoustic Tape
- Rockfon Mono Acoustic Filler
- Rockfon Mono Acoustic Elegant Render (finishes)
- Rockfon System Mono Acoustic access hatches: square or circular

Please contact Rockfon customer service for more information.

Performance



Sound absorption (α_w)

Mono Acoustic TE: 0.90 (Class A)
Mono Acoustic Direct: 1.00 (Class A)

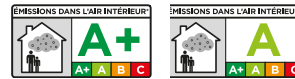


Light reflection and light diffusion

Light reflection: 87%
Light diffusion: 99%



Indoor environment



Environment

Fully recyclable stone wool

Edge types	Dimensions modular (mm)	Content recycled	Indoor environment
TE Elegant Render	1200 x 1200 x 40	57%	A+
	1800 x 1200 x 40	36%	A
Direct TE Elegant Render	1200 x 1200 x 40	57%	A



Reaction to fire

A2-s1,d0



Fire resistance

In accordance with European and national test standards, Rockfon Mono Acoustic is fire resistant for up to 60 minutes. Please contact us to obtain the fire resistance documentation.

Results	Dimensions (mm)	Thickness (mm)	PV No.
SF30	1200 x 1200	40 mm	RS15-098 (CSTB)



NATURALLY BEAUTIFUL

A solution for today and tomorrow

Carefully developed to complement modern building materials like stone, cement, wood and metals, Rockfon Mono Acoustic ceilings blend with the textures and colors of today and tomorrow, helping to create interiors pleasing to the eyes and the ears.

Our acoustic solutions come from sustainable resources. They help to improve human well-being while preserving the planet's resources. Rockfon uses natural rock, we recycle to support the circular economy and we are committed to reducing our carbon footprint every year. The recycled content of Rockfon products is between 29 and 64% according to ISO 14021. We believe that the next generation of acoustic solutions must be made with respect for future generations.





QUIETLY PLEASING

Bring the wow-factor

Rockfon Mono Acoustic ceilings don't just look good. They reduce noise, creating aesthetic and comfortable spaces that promote well-being.

Rockfon acoustic solutions are Cradle to Cradle Certified® at Silver and Bronze level. This certification concerns most of the products in our range. The Cradle to Cradle Certified® certification is a globally recognized measure aimed at creating healthier and more sustainable products designed for the circular economy.

Stone wool, the base material of our acoustic solutions, does not only have the ability to absorb sound. Made from natural volcanic rock, it is mould and bacteria resistant, fire resistant and easy to clean. And above all, it is durable. So your interior will continue to look good, feel right and work well for a long time.

Sounds Beautiful

Part of the ROCKWOOL Group / www.rockfon.co.uk

