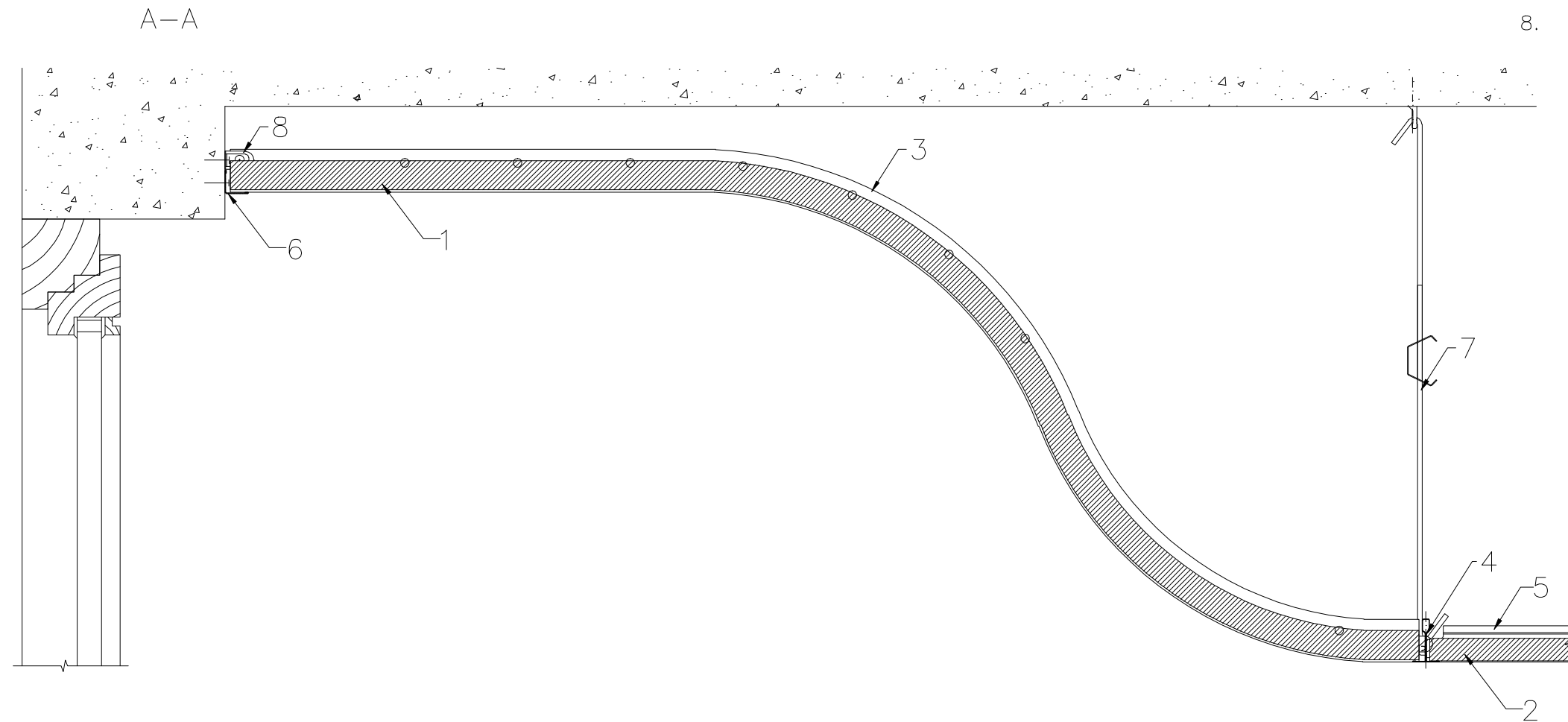


1. Tile ROCKFON FLECTOLINE
2. Tile ROCKFON SONAR A
3. Flecto profile
4. Main runner DX24
5. Cross tee DX24 1200mm
6. Perimeter angle trim
7. Adjustable hanger
8. Angle bracket



All screws and other fastenings shown are indicative and illustrative only. Specific fasteners should be chosen dependent on substrates and materials being used.

Information: Natural light from windows – Flectoline Flecto S–profile S 124, level shift 400mm	Date:		Drawing Type:	
	Drawing No.:		Drawn by:	Scale: 1:5 (A3)
	Contact Information:			



We kindly draw your attention to the fact that the above drawings should be considered as guidelines and therefore are without responsibility on the part of Rockfon.