

DATASHEET

Rockfon® Lamella



Sounds Beautiful

Rockfon® Lamella

- Patented modular platform provides over 650,000 different design possibilities in just one system
- Complimentary wood veneers can be combined to create attractive aesthetical expressions
- Contrasting lamella widths and profile heights let you experiment with diverse relief patterns and interspacing ideas
- Reduction of wall-based reverberation reduces occupant stress levels, improving concentration & performance
- Use of natural materials & colours reconnects building occupants with the outside world

Application Areas

- Office
- Leisure
- Education
- Retail

Product Description

Rockfon Lamella unit dimension:

2418mm x 2474mm (W x L)

Rockfon Lamella Slats are available in three wood veneer finishes:



1. Light Oak
2. Oak
3. Smoked Oak

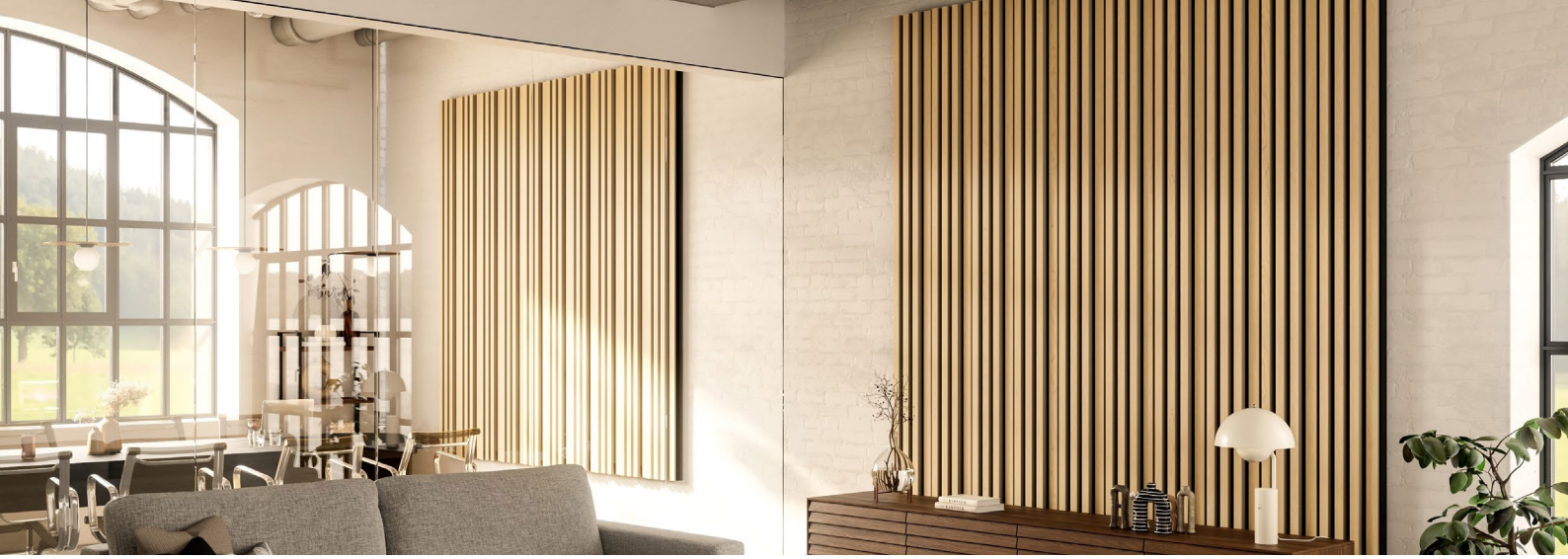
Rockfon Lamella Slats are available in three dimensions:

- 34mm wide x 30mm high
- 39mm wide x 21mm high
- 44mm wide x 12mm high

Rockfon Lamella Slats are available in 2474mm length (only).

- 40mm thick stone wool panels in charcoal black (NCS S 8500-N) provide superior sound absorption.
- System is straight-forward to install, thanks to the patented modular platform and clip-based attachment system.
- The complete system is pre-certified for all relevant performance declarations.

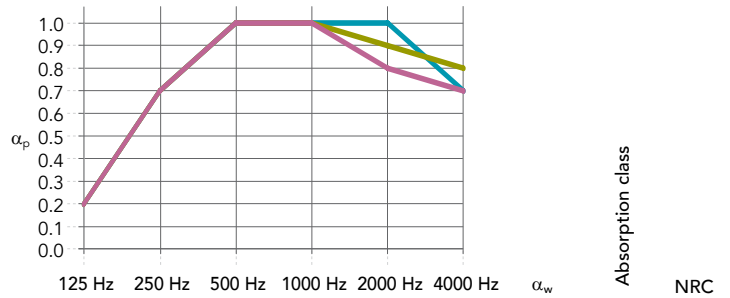
Product group	Product image	Component description	Length x Width x Height (mm)	Pcs per pack	Kg per pack
LAM MID		Rockfon Lamella Horizontal Profile - Middle	2400 x 45 x 51,8	3	4,22
LAM TB		Rockfon Lamella Horizontal Profile - Top/Bottom	2400 x 45 x 51,6	2	2,92
LAM END		Rockfon Lamella Vertical End Profile - Left/Right	2474 x 44,7 x 9	2	1,12
LAM CON		Rockfon Lamella Vertical End Profile - End Connector Bracket	59,6 x 25 x 24,6	10	0,4
LAM BS		Rockfon Lamella Horizontal Profile - Bottom Spacer	35 x 30 x 15,3	10	0,1
LAM CON		Rockfon Lamella Mounting Clip	29,9 x 20,5 x 13,3	200	1,03
		Rockfon Lamella Sound Absorbing Panel Charcoal	600 x 600 x 40	8	18,6
LAM 34		Rockfon Lamella Slat Light Oak 2474 34 30	2474 x 34 x 30	10	13,8
		Rockfon Lamella Slat Oak 2474 34 30		10	13,8
		Rockfon Lamella Slat Smoked Oak 2474 34 30		10	13,8
LAM 39		Rockfon Lamella Slat Smoked Oak 2474 39 21	2474 x 39 x 21	10	11,2
		Rockfon Lamella Slat Light Oak 2474 39 21		10	11,2
		Rockfon Lamella Slat Oak 2474 39 21		10	11,2
LAM 44		Rockfon Lamella Slat Light Oak 2474 44 12	2474 x 44 x 12	10	6
		Rockfon Lamella Slat Oak 2474 44 12		10	6
		Rockfon Lamella Slat Smoked Oak 2474 44 12		10	6
LAM GR		Rockfon Lamella Guiding Ruler	458 x 40 x 40	1	0,34
LAM CON		Rockfon Lamella Horizontal Profile - Middle Connector Bracket	66 x 24,95 x 2	10	0,4



Performance



Sound absorption
 α_w : up to 0.90 (Class A)
 (Complete system tested)



	125 Hz	250 Hz	500 Hz	1000 Hz	2000 Hz	4000 Hz	α_w	Absorption class	NRC
Rockfon Lamella 34x30 mm + absorbant 40 mm	0.20	0.70	1.00	1.00	1.00	0.70	0.90	A	-
Rockfon Lamella 39x21 mm + absorbant 40 mm	0.20	0.70	1.00	1.00	0.90	0.80	0.90	A	-
Rockfon Lamella 44x12 mm + absorbant 40 mm	0.20	0.70	1.00	1.00	0.80	0.70	0.85	B	-



Reaction to fire
 A1
 C-s2,d0
 (Complete system tested)



Indoor environment
 Rockfon ceiling products are classified in Class E1 in accordance with EN 13964 (EN 717-1).



Cleaning
 - Vacuum



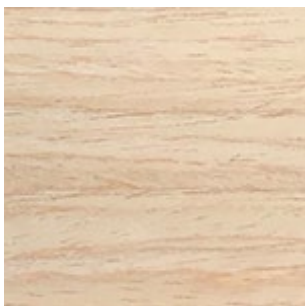
Material Health
 All materials used in Rockfon products are screened against the list of substances restricted under REACH and do not contain substances of very high concern (SVHC). Rockfon stone wool fibres comply with the safe fibre EU regulation and hold an EUCEB certification.



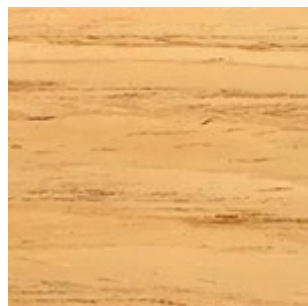
Hygiene
 Stone wool provides no sustenance to microorganisms



Recyclability
 Fully recyclable stone wool



Light Oak



Oak



Smoked Oak

09/2024 | All colour codes mentioned are based on the NCS - Natural Colour System® property of and used on license from NCS Colour AB, Stockholm 2012 or the RAL colour standard. Subject to alterations in range and product technology without prior notice. Rockfon accepts no responsibility for printing errors.

Sounds Beautiful

