

INSTALLATION GUIDE

Rockfon® System MediCare T24 A,E™ (ECR)



Concealed ceiling system
Unbroken look

- Elegant, unbroken ceiling expression
- Easy and fast to install
- Low installation height and full de-mountability
- Easy integration of services

Sounds Beautiful

Description

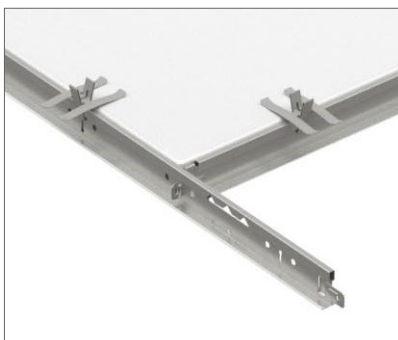
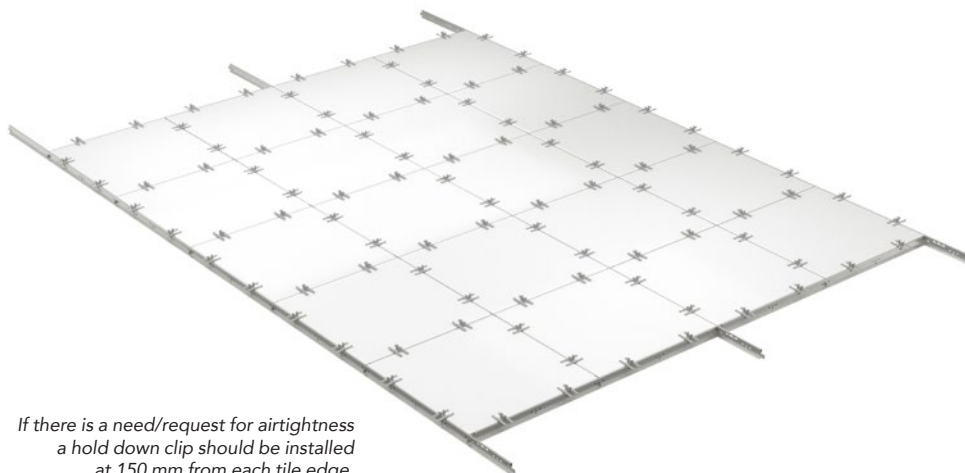
Rockfon System MediCare T24 A, E (ECR) range (incl. Standard, Plus, Air and Block tiles) is specifically developed for healthcare projects which require strict hygiene, cleaning, disinfection and fire safety requirements.

The Rockfon MediCare range offers various performance levels tailored to the needs for each risk zone (e.g. reception and waiting rooms, ICU, patient and recovery rooms etc). All products in this range have a low particle emission, with a clean room classification of ISO class 3 for Rockfon MediCare Air and Plus, ISO class 2 for Rockfon MediCare Block and ISO class 5 for Rockfon MediCare Standard. Thanks to their stone wool core, the Rockfon MediCare tiles have no nutritional value and do not form a breeding ground for harmful micro-organisms such as MRSA. The Rockfon MediCare tiles range has a fire reaction, class A1 for Rockfon MediCare Standard, Royal, Plus and Air and B-s1,d0 for Rockfon MediCare Block, and offers optimal sound absorption.

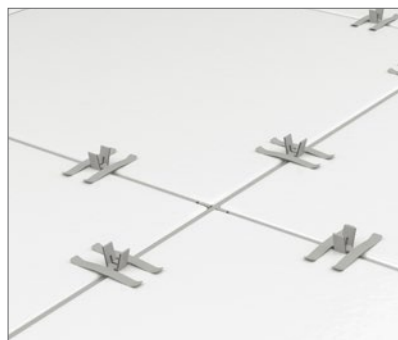
The tiles can be used to create a fully exposed or semi-concealed grid ceiling solution by combining the enhanced corrosion resistant Chicago Metallic T24 Click D2890 ECR Class D with the Rockfon MediCare Block or Air tiles or the standard Chicago Metallic T24 Click 2890 with Rockfon MediCare Standard or Plus tiles.

The Chicago Metallic T24 Click D2890 ECR class D grid components are made of prepainted galvanized steel Z 275 meeting the highest Class D corrosion resistance requirements of EN13964 (see below). The system accessories are produced with the same level of corrosion resistance protection.

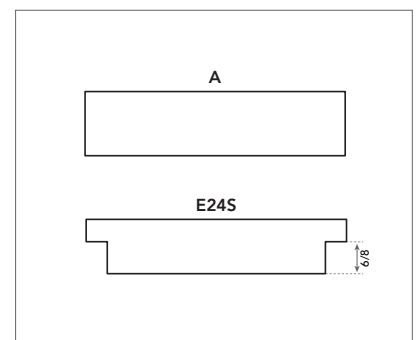
Both grid systems have main runners and cross tees with a uniform height of 38 mm, ensuring stability and easier integration of services. The system is fully demountable.



Click system providing easy and fast mounting and demounting.



38 mm full height main runners and cross tees for stability and easy service integration.



A and E edges ensuring fast mounting and full demountability.

Installation

Depending on the environmental and application needs 2 different system can be chosen:

1	Rockfon MediCare® Standard/Plus.....	4
2	Rockfon MediCare® Air/Block	6

System components and consumption guide

1. Rockfon MediCare® Standard/Plus

Tile	Chicago Metallic T24 Click 2890			Wall angles		Accessories			
	1	2	3	4	5	6	7	8	
-	Main runner T24 Click 3600	Cross tee T24 Click 600	Cross tee T24 Click 1200	W Shadow moulding wall angle	Perimeter wall angle trim	Hanger	Hold down clip	Wall spring Fixt	
Dimensions (mm)	Consumption/m ²								
600 x 600	2.78 pcs/m ²	0.83 lm/m ²	0.83 lm/m ²	1.67 lm/m ²	1)	1)	0.70 pcs/m ²	1)	1)
1200 x 600	1.39 pcs/m ²	0.83 lm/m ²	-	1.67 lm/m ²	1)	1)	0.70 pcs/m ²	1)	1)
1800 x 600	0.93 pcs/m ²	1.67 lm/m ²	0.56 lm/m ²	-	1)	1)	1.39 pcs/m ²	1)	1)
2100 x 600	0.79 pcs/m ²	1.67 lm/m ²	0.48 lm/m ²	-	1)	1)	1.39 pcs/m ²	1)	1)
2400 x 600	0.69 pcs/m ²	1.67 lm/m ²	0.42 lm/m ²	-	1)	1)	1.39 pcs/m ²	1)	1)

1) Consumption depends on room size.

Tiles - A, E edge



A edge



E edge

Chicago Metallic T24 Click 2890

1. Main runner T24 Click 3600



2. Cross tee T24 Click 600



3. Cross tee T24 Click 1200



Wall angles

4. W Shadow moulding wall angle



5. Perimeter wall angle trim



Accessories

6. Hanger



7. Hold down clip



8. Wall Spring Fixt



Performance

1. Rockfon MediCare® Standard/Plus



System load bearing capacity

Hanger distance (mm)	Dimensions (mm)	Max. Load (kg/m ²)	
		Max. 2.5 mm deflection	Max. 4.0 mm deflection
1200	600 x 600	9.9	16.5
	1200 x 600	14.5	24.1
	1800 x 600**	34.5	39.6
	2100 x 600**	32.9	34.7*
	2400 x 600**	31.3	34.5*

The system's load capacity is determined from a max. deflection of the individual components corresponding to 1/500 of the span or the cumulative deflection of all structural components which does not exceed 2,5 or 4 mm. The load bearing capacity is given as regularly distributed load in kg/m², the weight of the tile is not included.

* Max. weight defined in function of max. allowable load of quick hangers.

** Main runners are positioned at 600 mm centres.



Corrosion resistance

Class B (EN13964)



Demountability

Tiles mounted in Rockfon System MediCare T24 A, E (ECR) are fully demountable.



Fire resistance

Some Rockfon ceiling systems have been tested and classified in accordance with European norm EN 13501-2 and/or national norms. Please contact Rockfon.



Hygiene

Stone wool provides no sustenance to microorganisms

Microbiological class M1 fulfilling the requirements of Zone 4 (very high risk) defined by NF S 90-351:2013.

Tested with:

- Methicillin Resistant Staphylococcus Aureus (MRSA)
- Candida Albicans
- Aspergillus Brasiliensis

The bactericidal and fungicidal effect of dry steam cleaning meets the requirements of

NF EN 14561 (>5 log10) and NF EN 14562 (> 4 log10), meaning the disinfection is very effective.



Clean Room

MediCare Standard: ISO Class 5

MediCare Plus: ISO Class 3



Surface durability

Enhanced durability and dirt resistance.



Cleaning

MediCare Standard:

- Vacuum
- Damp cloth

MediCare Plus:

- Vacuum
- Damp cloth
- Dry steam cleaning (twice a year)
- Chemical resistance: resistant to diluted solutions of ammonia, chlorine, quaternary ammonium and hydrogen peroxide.

System components and consumption guide

2. Rockfon MediCare® Air/Block

Tile	Chicago Metallic T24 Click D2890 ECR Class D			Wall angles	Accessories				
	1	2	3	4	5	6a	6b	7	
-	Main runner T24 Click ECR Class D 3600	Cross tee T24 Click ECR Class D 600	Cross tee T24 Click ECR Class D 1200	Perimeter wall angle trim ECR Class D	ECR Hanger	MediCare Hold down clip (for 40 mm tiles)*	MediCare Hold down clip (for 25 mm tiles)*	Sealing tape	
Dimensions (mm)	Consumption/m ²								
600 x 600	2.78 pcs/m ²	0.83 lm/m ²	0.83 lm/m ²	1.67 lm/m ²	1)	0.70 pcs/m ²	11.1 pcs/m ²	11.1 pcs/m ²	1)
1200 x 600	2.56 pcs/m ²	0.80 lm/m ²	0.80 lm/m ²	1.60 lm/m ²	1)	0.70 pcs/m ²	8.3 pcs/m ²	8.3 pcs/m ²	1)

1) Consumption depends on room size.

*Use the MediCare hold down clip in case airtightness is needed.

Tiles - A edge



Chicago Metallic T24 Click D2890 ECR Class D

1. Main runner T24 Click ECR Class D 3600



2. Cross tee T24 Click ECR Class D 600



3. Cross tee T24 Click ECR Class D 1200



Wall angles

4. Perimeter wall angle trim ECR Class D



Accessories

5a. ECR Hanger



5b. ECR Hanger



5c. Hanger*



*note: only suitable for a max ceiling weight of 25kg/m²

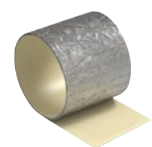
6a. MediCare Hold down clip (for 40 mm tiles)



6b. MediCare Hold down clip (for 25 mm tiles)



7. Sealing tape



Performance

2. Rockfon MediCare® Air/Block



System load bearing capacity

		Max. Load (kg/m²)	
Hanger distance (mm)	Dimensions (mm)	Max. 2.5 mm deflection	Max. 4.0 mm deflection
1200	600 x 600	9.9	16.5
	1200 x 600	14.5	24.1

The system's load capacity is determined from a max. deflection of the individual components corresponding to 1/500 of the span or the cumulative deflection of all structural components which does not exceed 2,5 or 4 mm. The load bearing capacity is given as regularly distributed load in kg/m², the weight of the tile is not included.



Corrosion resistance

Class D (EN13964)



Demountability

Tiles mounted in Rockfon System MediCare T24 A, E (ECR) are fully demountable.



Fire resistance

Some Rockfon ceiling systems have been tested and classified in accordance with European norm EN 13501-2 and/or national norms. Please contact Rockfon.



Hygiene

Microbiological class M1 fulfilling the requirements of Zone 4 (very high risk) defined by NF S 90-351:2013.

Tested with:

- Methicillin Resistant Staphylococcus Aureus (MRSA)
- Candida Albicans
- Aspergillus Brasiliensis

The bactericidal and fungicidal effect of dry steam cleaning meets the requirements of NF EN 14561 (>5 log10) and NF EN 14562 (> 4 log10), meaning the disinfection is very effective.

Performance

2. Rockfon MediCare® Air/Block



Clean Room

MediCare Block: ISO Class 2

MediCare Air: ISO Class 3



Air pressure

Rockfon MediCare Air is suitable for areas where differential pressure is required. When used in combination with closed neoprene foam tape* and: HDC 2 for the 25 mm tile; or HDC 7 for the 40 mm tile, the air leakage rate of less than 0.5m³/h/ m²/Pa under a pressure range of 5 to 40 Pa is achieved. The amount of hold down clips (HDC) depends on the tile dimensions and the room size/shape.

**Closed neoprene foam tape only applicable to MediCare Air. MediCare Block does not require closed neoprene foam tape.*



Surface durability

The high performance inert film of Rockfon MediCare Block provides enhanced durability and water repellence. The film contains DMAc (CAS 127-19-5) in a concentration $\geq 0.1\text{w}\%$ and $< 1\text{w}\%$. There is no intended release under normal foreseeable conditions of use. MediCare Air has an Enhanced durability and dirt resistance surface.



Cleaning

The surface of MediCare Air has enhanced resistance and is highly water-repellent. It is treated to minimise dirt pick-up and finger marking – this being essential for ease of installation and frequent demounting for access to services. The surface can be vacuum cleaned with a soft brush attachment and it resists diluted solutions of the following: ammonia, chlorine, quaternary ammonium and hydrogen peroxide. Cleaning with a sponge or damp cloth may render the surface slightly shinier and we therefore recommend cleaning the whole surface evenly for best results. MediCare Air can also be cleaned and disinfected twice a year by steam cleaning following a protocol defined by experts and using an adapted surface mop.

The surface of MediCare Block has enhanced resistance and is highly water-repellent. The surface can be cleaned daily using dry steam cleaning or by using a damp/wet cloth.

Chemical resistance:

Tests were carried out in accordance with ISO 2812-1 ("Determination of resistance to liquids - Part 1: Immersion in liquids other than water") and classification in accordance with VDI 2083 Part 17. Results are classified as 'Excellent' with the following detergents and disinfectants:

- Formalin (37%)
- Ammoniac (25%)
- Hydrogen peroxide (30%)
- Sulfuric acid (5%)
- Phosphoric acid (30%)
- Peracetic acid (15%)
- Hydrochloric acid (5%)
- Isopropanol (100%)
- Sodium hydroxide (5%)
- Sodium hypochlorite (15%)

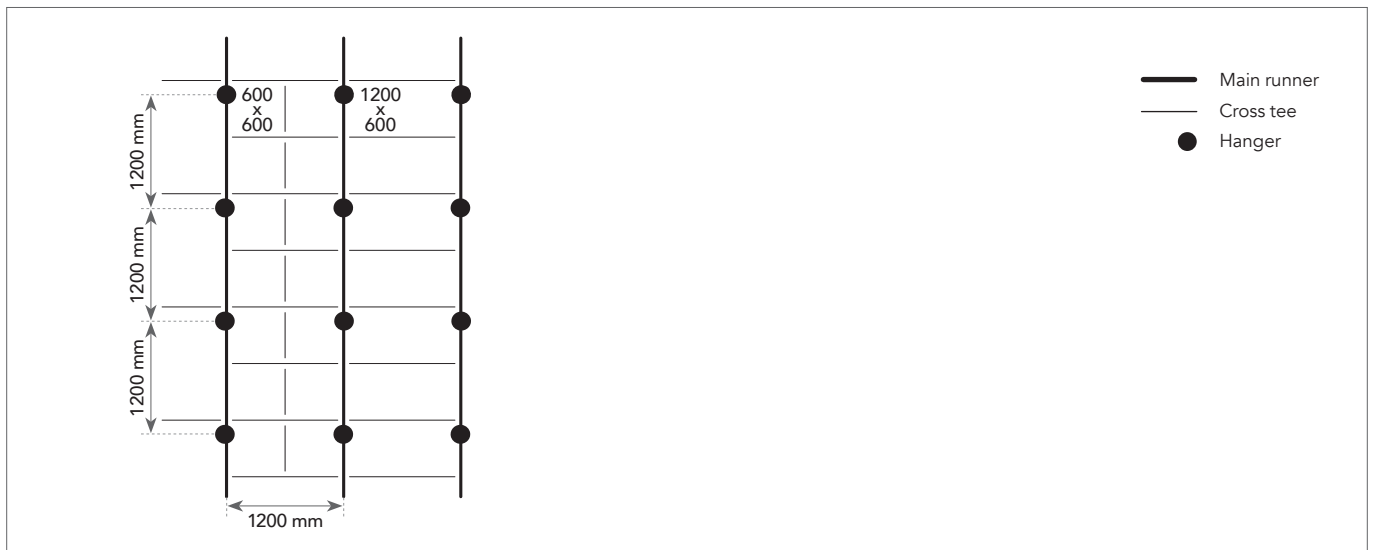
Grid Installation

1. Rockfon MediCare® Standard/Plus

2. Rockfon MediCare® Air/Block

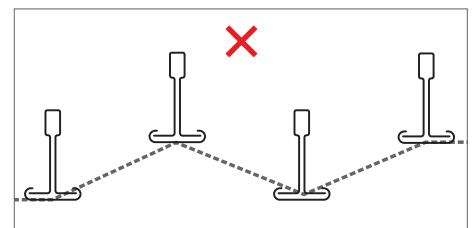
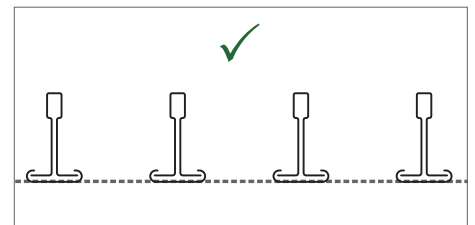
Grid layout and hanger location

Rockfon Medicare edge tiles can be installed in Rockfon System MediCare T24 A, E (ECR).
Some layout options are shown below depending on the size of the tile.

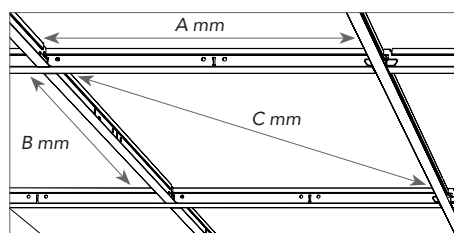


Installation requirements

During and after grid installation, it is important to check that T profiles are perfectly aligned horizontally. A maximum level difference of +/- 1 mm is recommended between profiles and should not be added. This tolerance is valid for all directions.



It is also important to check the squareness of the angles between the main runners and cross tees. This can be easily done by comparing the measurements of the two diagonals. See recommended tolerances on the table to the right.



Dimensions (A x B)	Diagonal (C)	Tolerance
mm		
600 x 600	814.6	+/- 1,0
1200 x 600	1309.5	
1800 x 600	1867.1	
2100 x 600	2154.4	
2400 x 600	2444.8	

Compatible Tiles Overview

1. Rockfon MediCare® Standard/Plus

2. Rockfon MediCare® Air/Block

All Rockfon A and E edge tiles available in dimensions mentioned in the "System load bearing capacity" table on page 4 can be installed in Rockfon System MediCare T24 A, E (ECR).

Tiles	Edge	Thickness	Dimensions (mm)								
			600x600	1200x600	625x625	1250x625	1800x600	2100x600	2400x600	2100x625	2400x625
Rockfon MediCare® Air	A24	25	•	•							
Rockfon MediCare® Plus	A24	20	•	•			•				
	E24S*	20						•	•		
Rockfon MediCare® Standard	A24	15	•	•							
	E24S*	15	•	•							
Rockfon MediCare® Block	A24	25	•	•							

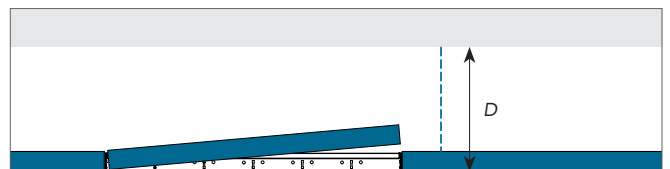
*E24S means the rebated E edge has a straight cut (as opposed to leaning cut) on it.

Minimum installation depth (mm)

Tiles mounted in Rockfon System MediCare T24 A, E (ECR) give full demountability.

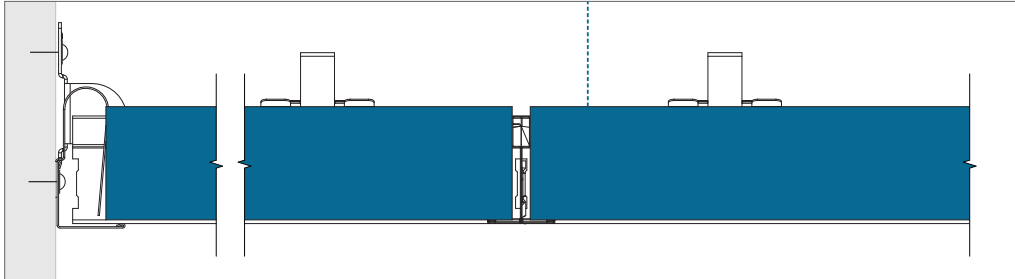
The installation depth is defined as the distance from the visible side of the tile to the underside of the substrate, where the hangers are fixed. D is the minimum installation depth for easy tile installation and demountability.

Tile thickness	Dimensions	D
	mm	
15-20-25	600 x 600 1200 x 600 1800 x 600 2100 x 600 2400 x 600	100-150

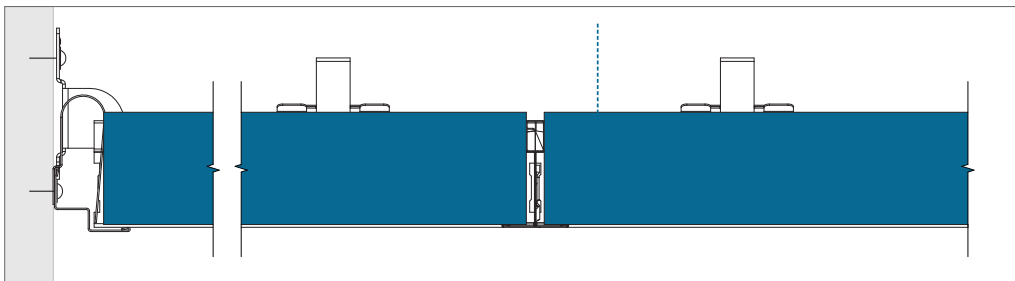


Perimeter Finish Options

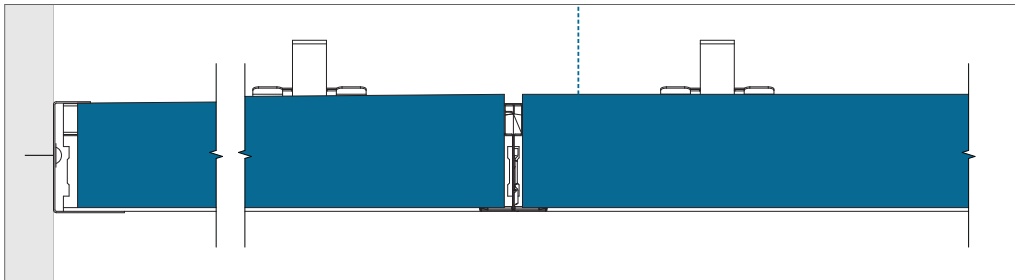
Below are examples of perimeter finishing. Further details can be found on www.rockfon.co.uk



*A-edge - Perimeter finish with wall angle trim and wall spring fix.
Wall spring fix and the wall and bridging bracket are mandatory when cleaning and/or pressure control are required.
Wall spring fix and the wall and bridging bracket are not ECR.*



*E-edge - Perimeter finish with wall angle trim and wall spring fix.
Wall spring fix and the wall and bridging bracket are mandatory when cleaning and/or pressure control are required.
Wall spring fix and the wall and bridging bracket are not ECR.*



A-edge - Perimeter finish with J-wall angle.

Service integration

Rockfon ceiling tiles are easy to cut and therefore it is very easy to integrate services. The cut-outs can be made with a simple utility knife.

When the ceiling system is installed to be load bearing, Rockfon recommends using support arms or a yoke that transfers the weight of the service to the grid. The size of the yoke should not be bigger than module 600 x 600 mm and the use of additional hangers to overcome deflection in the ceiling system is strongly recommended.

When using support arms to spread the weight of the installation, Rockfon recommends spanning a maximum of 600 mm and where necessary the use of additional hangers to counteract potential ceiling deflection. For more information on the load bearing capacities of this Rockfon System MediCare T24 A, E (ECR) please refer to the table below.

Note: Service integrations were not tested on air tightness.

Planning

A thorough planning and installation scheduling of the project/site will result in less re-work and less ceiling tile damage. Rockfon recommends discussing the installation planning thoroughly and well in advance with other installers that have to work in or near the suspended ceiling. By doing so, damaged ceiling tiles and dirty spots on the finished ceiling surface can be avoided, which reduces project costs.

Overview load bearing capacity

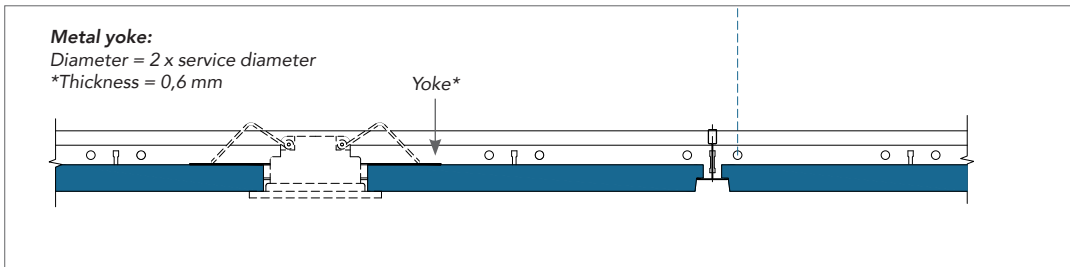
	Weight of installations		
	< 0.25 kg/pcs	0.25 ≥ 3.0 kg/pcs	> 3.0 kg/pcs
Small service integration; Spot- or downlight, speaker, ventilation etc.	Drawing A	Drawing B	Suspend separately
Large service integration; Downlight, speaker, ventilation, etc.	Drawing A	Drawing B	Suspend separately
Modular lighting- or ventilation fixture	Drawing C; System load bearing capacity (if evenly distributed over grid in kg/m²)		

When installing services in Rockfon System MediCare T24 A, E (ECR) you should always follow local building regulations if more strict than the load bearing capacity constraints Rockfon recommends in the above table.

Contact your local Rockfon technical service for more information on suitable lighting fixtures, accessories and the different services integrated in Rockfon System MediCare T24 A, E (ECR). Special solutions with integrated services are, if available, shown on page 18 of this document.

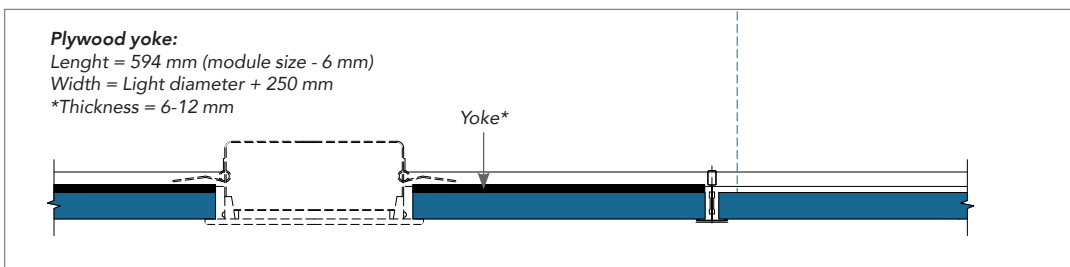
Drawing A

The integration of a spotlight, smoke detector, speaker, etc. (weighing < 0.25 kg/pcs).
Rockfon recommends installing spotlights and downlights in the centre of the tile.



Drawing B

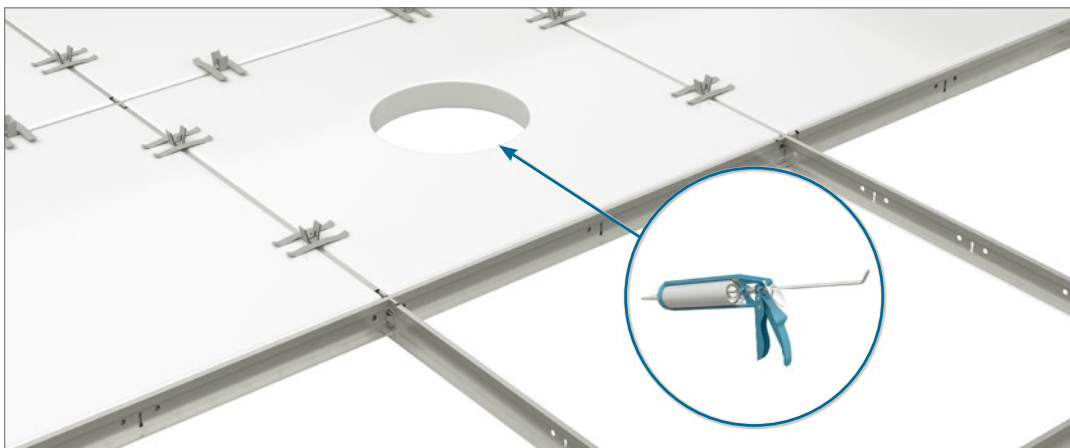
The integration of a downlight, spotlight, smoke detector, loud speaker, etc. (weighing $0.25 \geq 3.0$ kg/pcs).
Usage of an appropriate yoke to spread the load to the grid (as shown in the detail) or usage of support arms to spread the load to the grid system is strongly recommended. The use of additional hangers to avoid excess deflection and a centralized installation of the lighting in the tile is strongly recommended.



*The thickness of the plywood or metal yoke needs to be adapted in conjunction with the weight, size and position of your service integration (e.g. downlight or speaker). The Plywood or metal yoke itself may not deflect after installing your service integration.

Drawing C

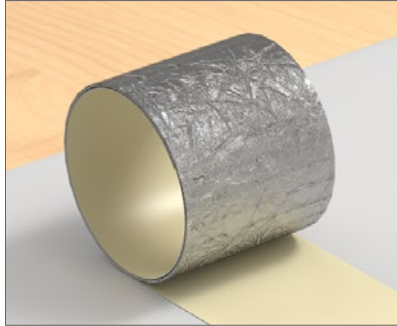
To achieve the airtightness values of Rockfon MediCare Air and Block, all cut outs for services need to be sealed with an airtight sealant.



Specific Solutions

Sealing Tape for MediCare Air and Block tiles

To seal custom-cut tiles, we provide an aluminum foil adhesive tape. It has good adhesion on the tile and eliminates fibre emission and dust which is essential in healthcare environments where particle emissions must be avoided. It is quick and easy to use. The sealing tape is air-tight as well as abrasion and humidity resistant. It is 75 mm wide and supplied in 50 m rolls.



1. Cut to required dimensions.



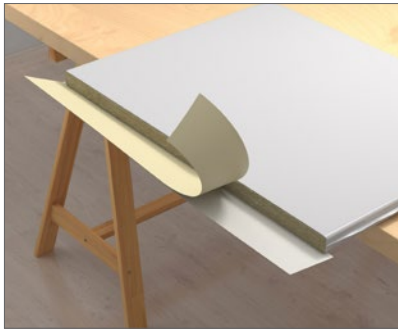
2. Measure edge + 10 mm and peel.



3. Align 5 mm overlap on front and press.



4. Flip tile to the back.



5. Peel.

Note: For Rockfon MediCare Block custom-cut tiles on the perimeter we advice the use of silicone sealant.



6. Fold up and press.



7. Form-fold corners.

Wall application

Rockfon MediCare Block panels can be applied as a wall solution by using the Rockfon MediCare wall bracket.

This solution is highly suitable for daily intensive cleaning in a high demanding environment.



To install the brackets, a min. distance of 36mm is required between the tiles.



1. Install the bracket against the wall.

Consumption guide ECR wall bracket for 40 and 25 mm tiles for wall applications	
Consumption	
2 pcs/tile for 600 x 600 tiles	
2 pcs/tile for 1200 x 600 tiles, installed vertical	
4 pcs/tile for 1200 x 600 tiles, installed Horizontal	



2. Install the tile between the upper and lower bracket (can be slid in).



3. Panels can be installed vertically or (as shown on the first picture) horizontally.

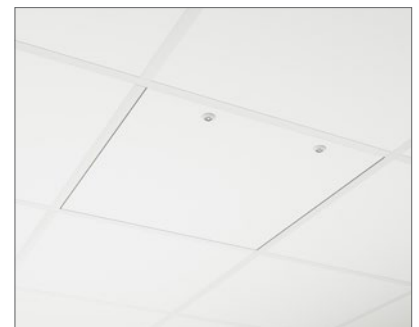
Air sealed inspection hatch

Rockfon has developed an air sealed inspection hatch, in which the Rockfon ceiling tile is glued in the hatch for a uniform ceiling surface and better acoustics.

The hatch is made of galvanised steel powder coated white. It is fitted with 2 budget locks as a standard and is suitable for exposed grid, lay-in ceilings. It is available in 600 x 600 mm dimension. A polyester gasket seal ensures air-tightness between the hatch's frame and door. The frame of the hatch sits behind the T grid. Although it is fairly light (5.25 kg including tile), additional hangers on the grid may be necessary to improve stability. If damaged, the ceiling panel can easily be replaced with a new panel by demounting the locks.



Air-tightness of the air sealed inspection hatch in combination with Rockfon MediCare Air is documented. The use of neoprene foam tape on the grid in combination with 25 mm Rockfon MediCare Air tiles is recommended to improve airtightness performance of the entire ceiling / hatch system. A summary of the results is available upon request. For further information, please contact Rockfon.



General installation recommendations

Junction between ceiling and wall or other vertical surface

The perimeter trim should be fastened to vertical surfaces at the required level using appropriate fixings at every 300-450 mm centres. Ensure that butt joints between adjoining lengths of trim are neat and that the trim is free from kinks and remains true and level. For the best aesthetics, use as long a length of trim as possible. The minimum recommended cut length is 300 mm.

Timber trims, timber shadow battens

Shadow mouldings should not be used with fire resisting/protecting ceilings.

Junction between ceiling and curved vertical surface

The use of a preformed curved perimeter trim is the most appropriate method. Rockfon can provide details of curved perimeter trims on request.

Corners

Perimeter trims should be neatly mitred at all corner joints. Overlap mitres are acceptable on metal trims on internal corner joints unless specified otherwise.

Suspension grid

Unless specified otherwise, the ceiling should be set out symmetrically and where possible, perimeter tiles should be greater than 200 mm in width. The hangers should be fastened with appropriate top fixings and to the main runners at 1200 mm centres (or less with greater load).

Main runners should be positioned at 1200 mm centers at all times. A/A distance of the cross tees depends on the module size of the tiles.

For correct grid installation, make sure the T profiles are perfectly aligned horizontally and diagonals of modules are equal (see requirements and tolerances on page 8). Main runner joints should be staggered and there should be a hanger positioned within 150 mm of the fire expansion element/cut-out and within 450 mm of the end of the main runner where it terminates at a perimeter.

Additional hangers may be necessary to support the weight of ceiling services. When using direct hangers, a fixing nail should be used to lock the hanger on to the bulb of the main runner.

Tiles

It is recommended to use clean nitrile or PU coated gloves when mounting Rockfon tiles in order to avoid finger prints and dirt marks on the surface.

For an optimised work environment, we recommend installers always observe good health and safety practices and follow the manual handling advice on our packaging.

Cutting is made easily with a sharp knife. All off-cuts and holes must be treated according to local Building Regulations.

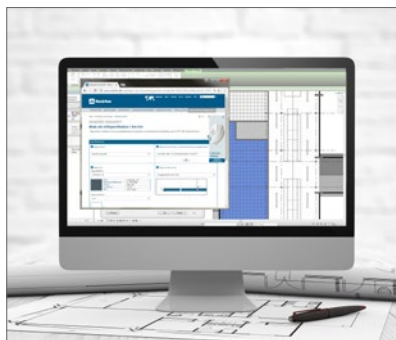
Note! Certain smooth matt surfaces are directional. To ensure consistency of the finished ceiling, it is important that all tiles are mounted in one direction indicated by the arrow printed on the back of each tile.

Tools

Rockfon has developed specific tools that are available on www.rockfon.co.uk



Visit our online CAD Library or BIM portal to assist you in your project design.



Generate specification texts for our products on our website.



Explore our vast library of reference projects on our website.

11.2024 | All colour codes mentioned are based on the NCS - Natural Colour System® property of and used on license from NCS Colour AB, Stockholm 2012 or the RAL colour standard. Subject to alterations in range and product technology without prior notice. Rockfon accepts no responsibility for printing errors.

Sounds Beautiful

